



## **PFM-View**

Version 1.14



## User manual and application instructions

**A Counting Solutions software application**

*Alphen aan den Rijn, August 2002*

## **PFM – View version 1.14, July 2001**

### **General description.**

The PFM-View application program is designed to give an easy and quick interface to the counting information data from the PFM counting systems for single and multiple entrance applications.

The application allows you to set up the package for simple or complex multi sensor installations and to define object and zone totals for free selectable periods over day, week or quarter intervals.

The program is designed to run under the Window application programs and offers additional export facilities to both Excel or Word programs.

### **Installation requirements**

The PFM-View application requires the following configuration;

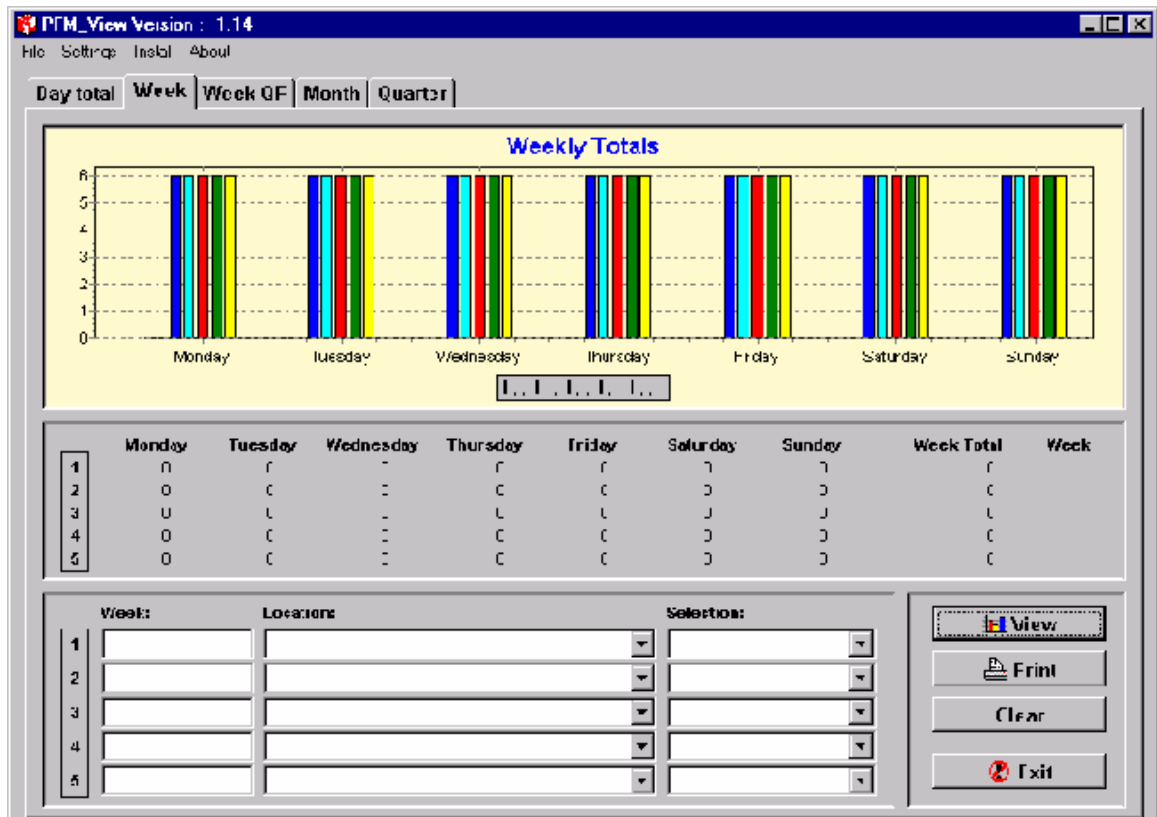
Windows 95 or higher

Installation;

The application will be installed with the SETUP command and run in a dedicated directory i.e. PFM-View in the program files directory. Use UNINSTALL to delete the program

The program.

After starting the PFM-View application the following screen will appear:



After initial installation the program needs to be activated for personal use.

Note: the PFM-View program license relates to the workstation. Copying of the program to another station will require an additional set-up code.

To activate the program, click on INSTALL and the following window will appear

**Contact your supplier to obtain your Personal authorization code.**

Personal code: 3023204046

Authorisation code: 0

OK Cancel Help

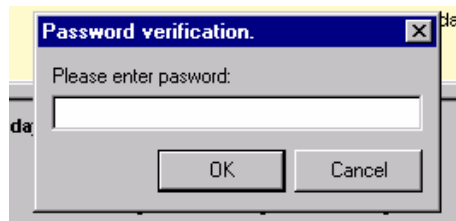
To set up the program, follow the instructions as mentioned below.

Setting requirements.

The following information and parameters need to be set to get started with the program;

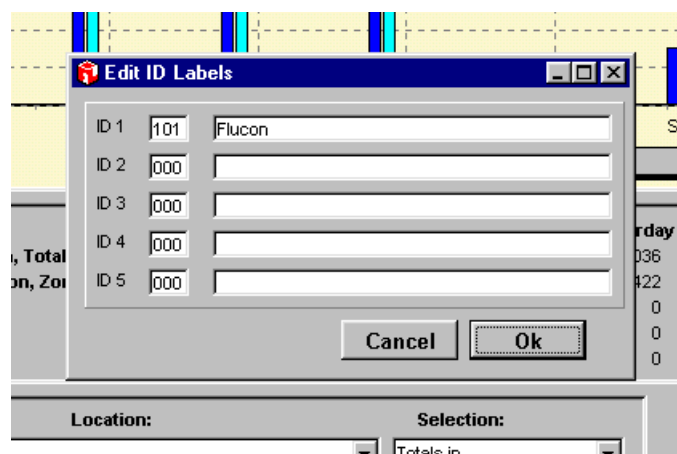
- The store name relative to the store ID number as used in the data files
- The path where to find the data files
- The column number for each direction of flow to set up the totals calculations
- The general descriptions for the graphs and tables

Click on “Setting” and select “Label ID numbers”



**Note default passwords are : USER and SUPERVISOR**  
(USER for all entries, SUPERVISOR to change the Data Directories)

Enter the three digit ID number and type in the name of the object. If correct click on Ok.

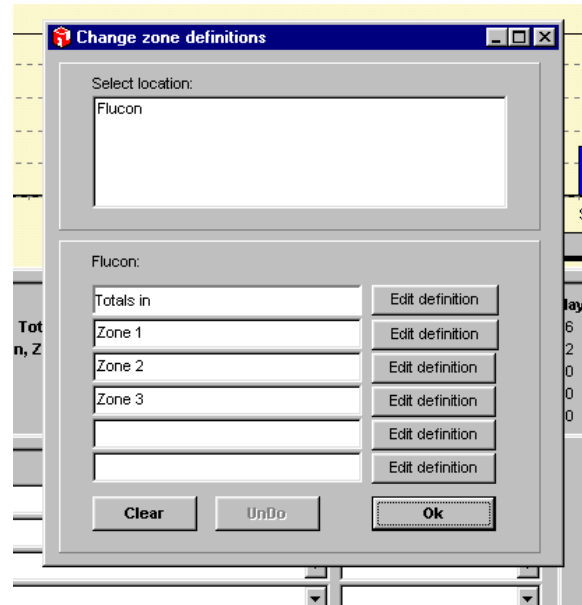


Select from the settings menu “Define Zones”.

Select the relevant store.

The store totals are predefined.  
Edit, if applicable, the other zone names

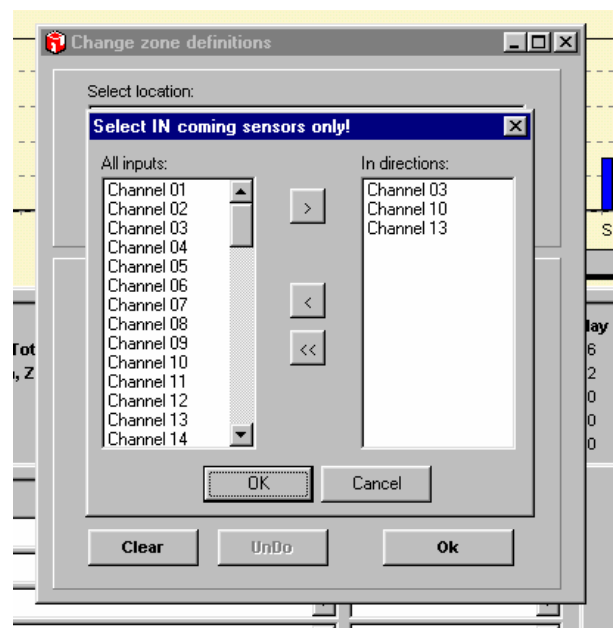
For the store total and zone total  
The relevant column number must be  
Defined for the “IN” directions



To do this, click on “Edit Definition”

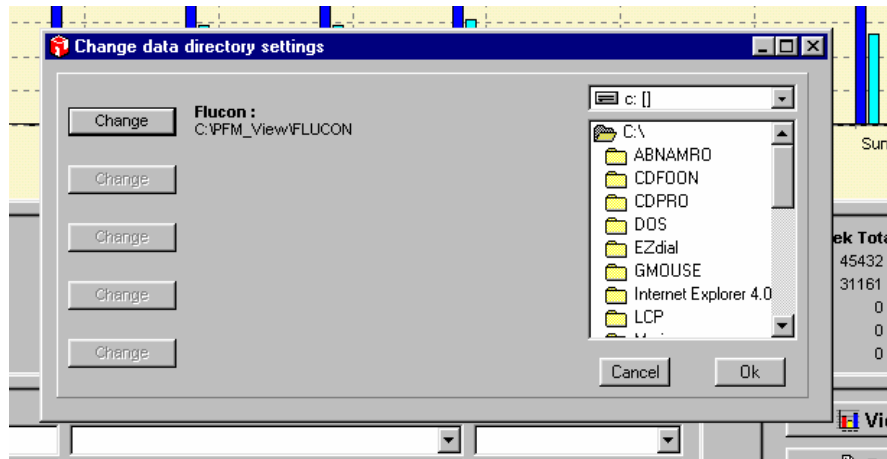
Select the required channel nr. for all  
the IN directions and bring them to the  
right hand column. If all are OK click on the  
OK button.

Follow this procedure for every zone



At this point the actual installation of the sensors is linked to the program for further calculations. Now we have to define the location of the data files in the system. Note that the location of the files can be on another computer when used in a network environment.

To define the path for the files click on “Set data Directories” under the “Settings” menu.



Select the path by clicking on ; disk first followed by the sub directory structure on that disk. On the left hand side the actual path selection is indicated for the selected store. When multiple stores are configured, each store should be set for the path.

The program is now ready to be used for the different calculations



To view the data the following selections can be made:

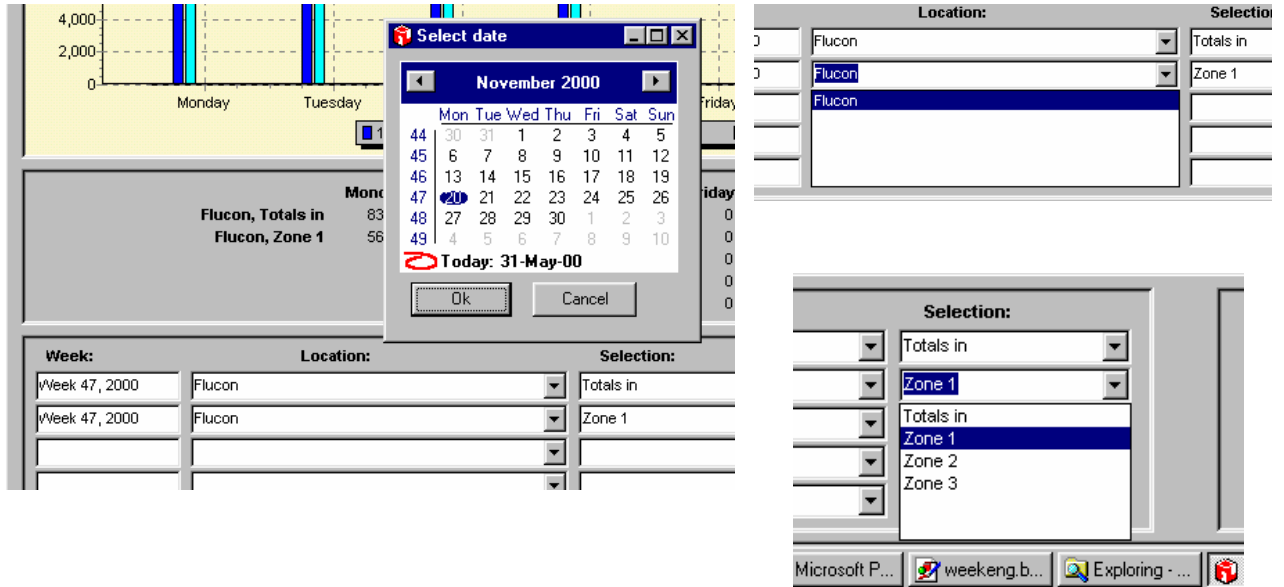
Data per day, i.e. the intensity level over the day in graph with a total “in” per day part

Data per week, i.e. daily totals in graph and tables with a week total table

Data per Quarter, i.e. week totals for a 13 week period

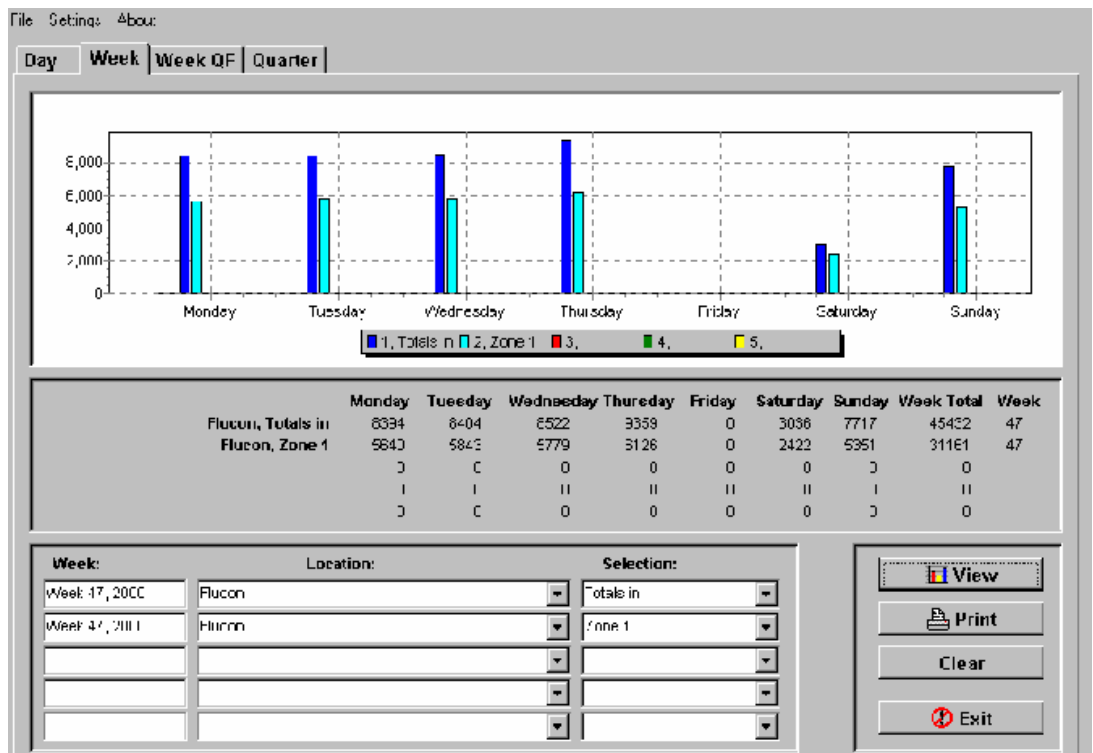
At the week level a graph can indicate the difference between ‘IN” and “OUT” in % . If the difference is exceeding the 10% + or – marker the actual data from file should be reviewed for any problems. A good quality file should be within a 5% band./

After selecting the required graph, the program will allow you to set the store and/or zone over a selected period.



**Note:** Only when all three variables are selected, the graph and tables can be produced by clicking on

**VIEW**

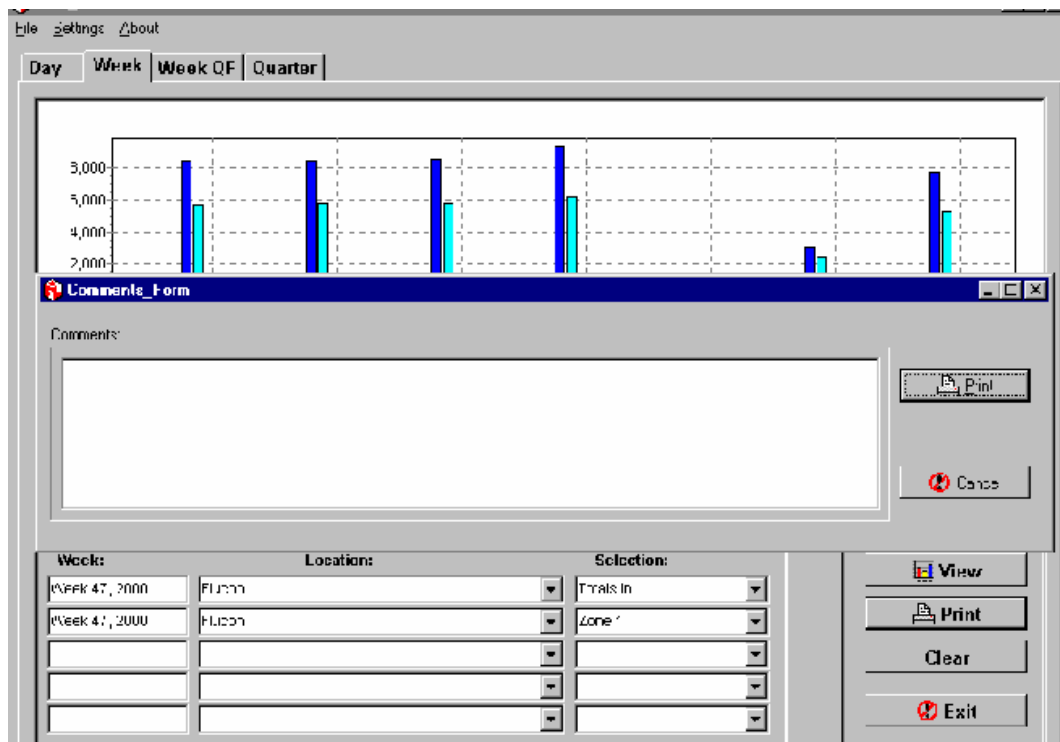
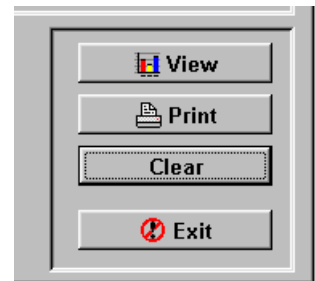


If all settings are correct the above sample graph and tables will appear after clicking with the mouse on the VIEW button.

To select additional zones or stores or to compare other time intervals, select to a maximum of five different entries in the relevant section.

If the program is closed with the EXIT button, the last selections will be saved to file. When the program is started again the last View will appear.

With the CLEAR Button all selections will be Cleared. To get a print of the report click on PRINT. The program will allow you to add comments to the Report in the special text box as it appears on the screen.





After completion of the comments click on the PRINT button and a full report (graph, table and comments) is printed on the default printer of your system. To change the printer selection, use the standard WINDOWS printer settings to change your default printer setting.

### **Export facilities**

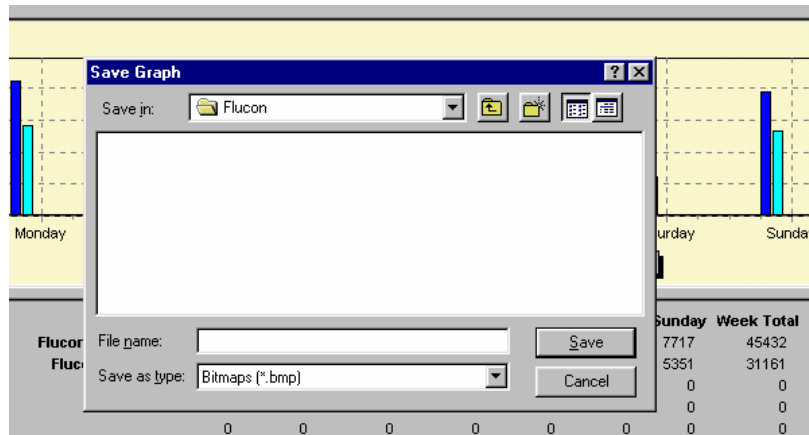
Two more options for the export of data are available:

To export the graph to a \*.BMP file.

To export the table to a \*.XLS file.

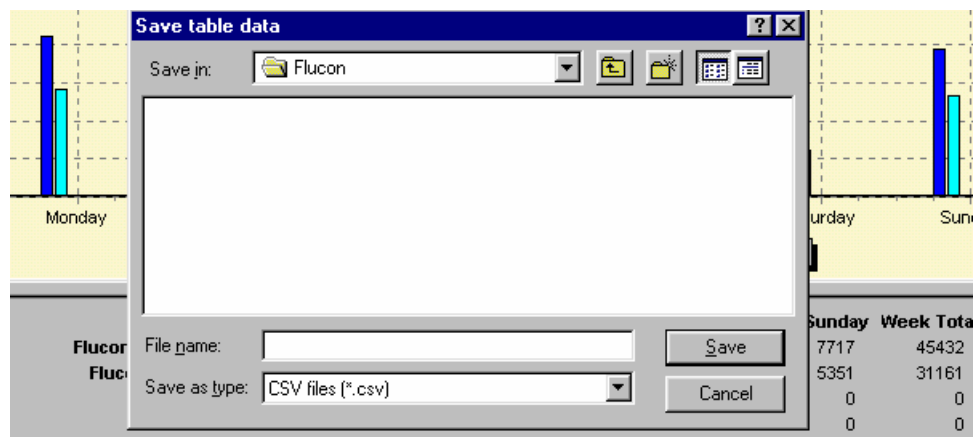
The first format will allow you to import the graph in any other Microsoft program. The graph can easily be used in a Word document if more extensive reporting is required.

To achieved this, put the mouse indicator on the graph and double click on the left hand mouse button.



Enter the required name for the graph with the BMP extension and select the path and directory for saving the graph.

To export the tables to an CSV / Excel format file, put the mouse on the table and double click on the left hand mouse button.

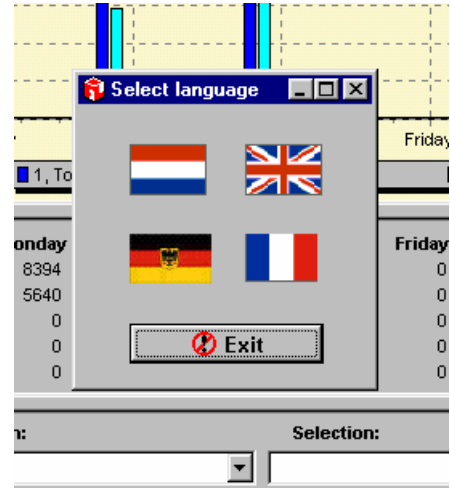


Follow the same procedure, i.e. enter the name with the csv extension and select the path and directory.

Other features included in the program are:

Selecting the language:

By clicking on the flag, the standard texts  
Will be changed to the selected  
language.



**Special note:**

For the day view the tables will show day-part totals on the screen. If the day graph is printed, the printout will give hourly totals and the print will be in landscape format.