



FLUCON BV

Kalkovenweg 54
2401 LK Alphen aan den Rijn
Postbus 2065, 2400 CB Alphen aan den Rijn
The Netherlands
Tel: + 31 (0)172-435901 Fax +31 (0)172-422271



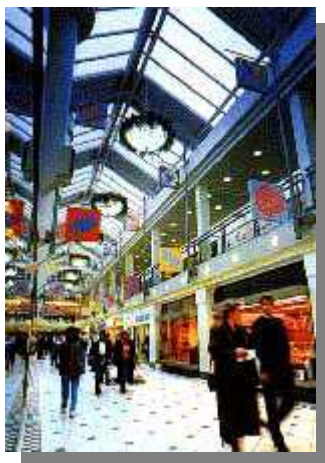
COUNTING SOLUTIONS

1-3 Bowling Green Road
Kettering
Northants, NN15 7QW
England
Tel.:44 (0)1536511010 fax : +44 (0)1536513653



Manual Multi-Connect

a PFM Customer Counting Product



Version 1.x

April 2005

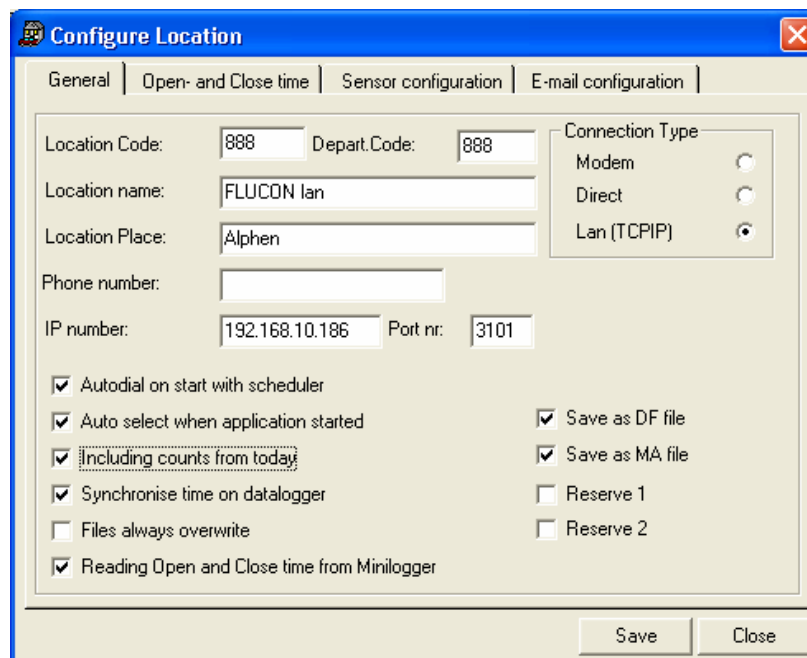
General

Multi-Connect is designed to optimize the use of the network infrastructure by running a preset number of Mini-Connect applications simultaneously.

The maximum number of connections is set at 10.

Installation

Multi-Connect does not require any specific settings. The application runs in the Mini-Connect folder and uses the Mini-Connect setting file for information on the various locations.

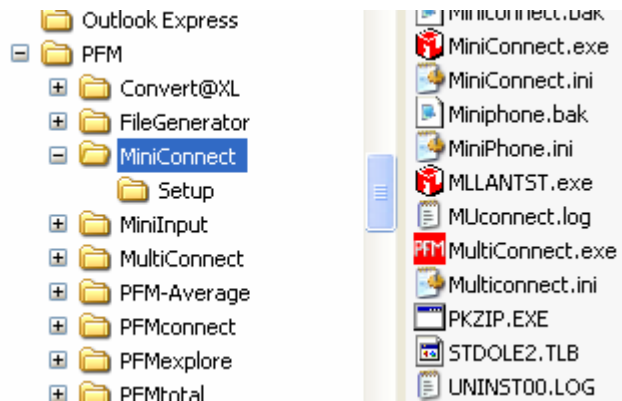


Setting of Mini-Connect

The Mini-Connect folder will have 2 additional files;

- The MultiConnect.EXE
- The Multconnect.ini

The Multconnect.ini file can be edited to set the number of sessions that should run simultaneously. The maximum number is 10



The Muliconnect.ini will hold the following information:

```
[MultiConnect Instellingen]
DATAPATH=C:\PFM_LOG\DATA\
BACKUPDATAPATH=C:\PFM_LOG\DATA_BAK\
RXTIMEOUT=40000
MAXCONNECTIONS=6
```

The RXtimeout=40000 is the time required to close and restart a connection, depending the ISDN line characteristics. The number 40000 relates to a number of loops and depends on the speed of the dialling computer.

The MAXCONNECTIONS=6 is the default setting. The maximum is 10.

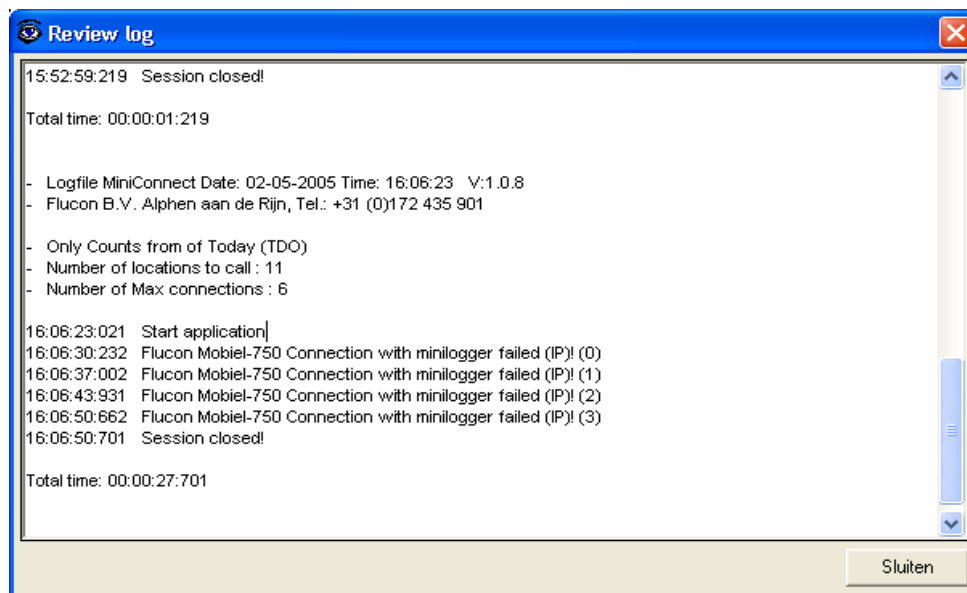
Attributes

The following attributes can be used:

- MultiConnect.exe **/a** = will allow you to start the application automatically using a scheduler application.
- MultiConnect.exe **/tdo** = the application will collect “today’s data only”. This will speed up the overall connection time, however the application should run daily after closing time of the stores.

Logging

Multi-Connect will produce a log stating the details of each session. Any problems will be logged.



Sample of log